

Competence when it comes to hot water.



## AquaWIN – the flexible hot water tank range.

### Indirect coil heater

AquaWIN Klassik/Premium AK/AP 200, 300, 500

### Solar powered indirect coil heater

AquaWIN Solar Klassik/Premium ASK/ASP 300, 500

### Combined-indirect coil heating tank

AquaWIN Kombi-Klassik/Premium AKK/AKP 155, 205

# Hot water in perfection.

AquaWIN – a name which satisfies a wealth of requirements.

The AquaWIN hot water tank programme from WINDHAGER ZENTRALHEIZUNG combines superior hot water comfort with absolute economicalness. AquaWIN hot water tanks are available as indirect coil heater, solar powered indirect coil heater and as combined-indirect coil heating tank in the "Klassik" and "Premium" lines which means that they satisfy the individual requirements of our customers. Klassik hot water tanks are equipped with a magnesium anode. Premium boilers are equipped with a powered active anode system. With a capacity of 150 to 500 litres, AquaWIN hot water tanks are the right choice for any household.



Indirect coil heating tank  
AquaWIN AK/AP

Solar powered indirect coil heating tank  
AquaWIN solar ASK/ASP

Combined-indirect coil heating tank  
AquaWIN AKK/AKP

## The AquaWIN hot water tank range in an overview:

	Storage capacity	150 l	200 l	300 l	500 l
Indirect coil heater	AquaWIN Klassik	–	AK 200	AK 300	AK 500
	AquaWIN Premium	–	AP 200	AP 300	AP 500
Solar powered indirect coil heater	AquaWIN SOLAR Klassik	–	–	ASK 300	ASK 500
	AquaWIN SOLAR Premium	–	–	ASP 300	ASP 500
Combined-indirect coil heating tank	AquaWIN Combi Klassik	AKK 155	AKK 205	–	–
	AquaWIN Combi Premium	AKP 155	AKP 205	–	–



## Persuasive quality for the highest comfort:

**Flexible operation:** AquaWIN hot water tanks can be heated by a boiler, as well as an immersion heater.

**Heats up fast:** the enamelled heating coil is completely immersed in the water of the storage tank and reaches to the bottom of the hot water tank which means that the heat is transferred in the cooler zone. This guarantees short heating-up times and a high hot water performance.

**High-quality surface seal of enamel:** enamel is corrosion-free, temperature-resistant, hygienic and safe from a physiological point of view. In addition enamel is galvanically neutral and AquaWIN hot water tanks can, therefore, be integrated in any existing piping system.

**Perfect and environmentally-friendly insulation:**

AquaWIN hot water tanks guarantee optimum heat storage as a result of a joint-free, environmentally-friendly polyurethane hard foam insulation containing no CFC or HCFC.

**All in all: perfect quality – guaranteed!**

AquaWIN Klassik hot water tank: 5 years full guarantee.

AquaWIN Premium hot water tank: 5 years full guarantee as well as 10 years hot water tank guarantee.

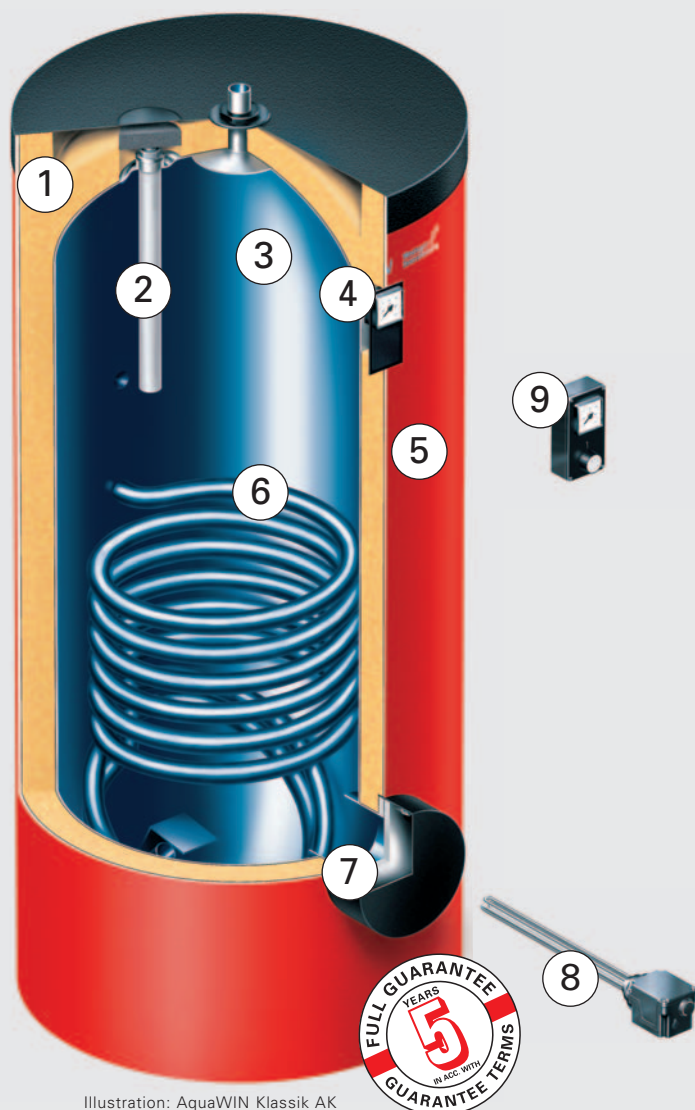


Illustration: AquaWIN Klassik AK

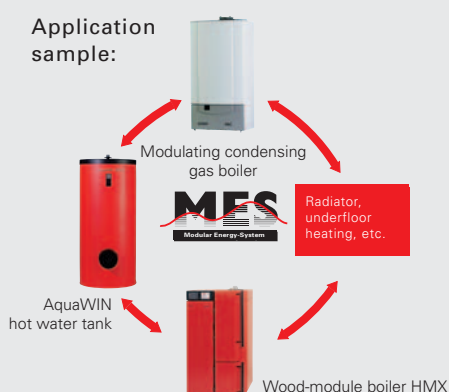
- 1 High-quality polyurethane hard foam insulation with no HCFC
- 2 Magnesium anode (AquaWIN Klassik)
- 3 Quality enamelling
- 4 Thermometer
- 5 Plastic casing coated on soft foam
- 6 Enamelled heating coil for charging via the boiler
- 7 Service flange

### Accessories:

- 8 Immersion heater
- 9 Hot water thermostat (can be directly attached to the hot water tank)

# Easy to combine for a perfect heating solution.

## Integration in existing heating systems:



All WINDHAGER hot water tanks can be easily combined with WINDHAGER boilers for oil, gas and solid fuels. Requiring an area of less than half a square meter, AquaWIN hot water tanks will even have enough space in very small rooms. AquaWIN hot water tanks can also be integrated in a dual heating system without any problems (wood and gas for example) whereby a central control system is the best way of ensuring smooth operation (for example an MES – Modular Energy System from WINDHAGER).

## The specialist: AquaWIN combined-indirect coil heating tank:

WINDHAGER boilers are particularly attractive with the combined-indirect coil heating tanks AKK 155/205 or AKP 155/205. The adjusting screws provided simplify the horizontal alignment of the hot water tank. If the boiler JetWIN or the condensing oil boiler EcoWIN is installed on the combined-indirect coil heating tank AKK or AKP 155/205, a suitable hot water loading pump set is available for this. All of this saves time and money at the installation stage.



AquaWIN AKK/AKP 155/205



Oil-Unit JetWIN/EcoWIN  
on AquaWIN AKK/AKP 155/205



## Solar powered indirect coil heater ASK or ASP.

The AquaWIN solar powered indirect coil heaters have a second heating coil installed, which is an additional heating coil. As a result they can be operated in different ways – in line with requirements:

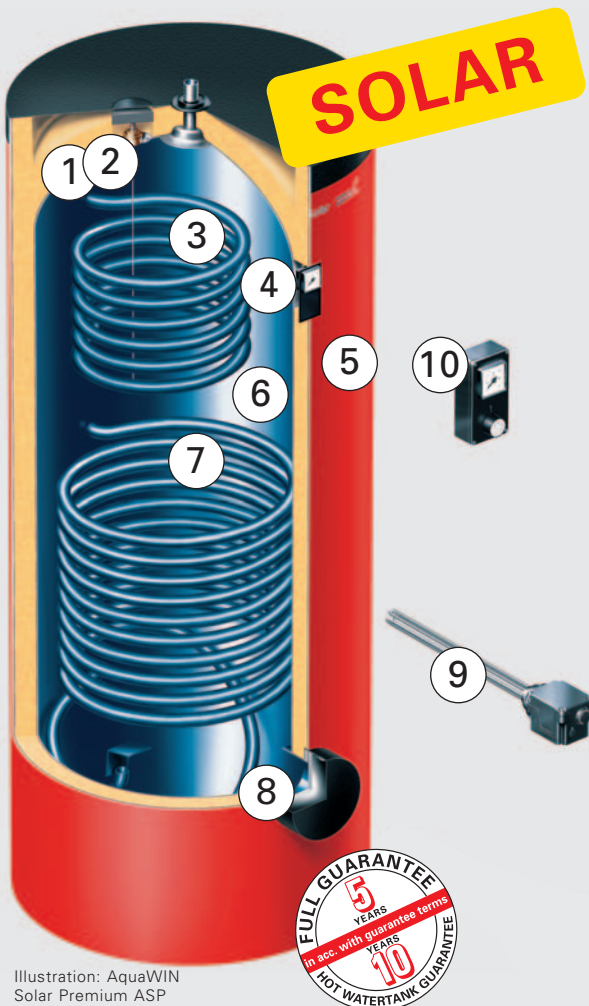
As with every AquaWIN hot water tank:

- using a boiler (oil, gas or solid fuel boiler) via the heating coils installed as a standard (upper coil).
- using electricity with an immersion heater with 2.2, 3, 4 or 6 kW (available as accessories).

Additional features with solar powered indirect coil heaters:

- With solar collector over the solar heating coil (lower coil).

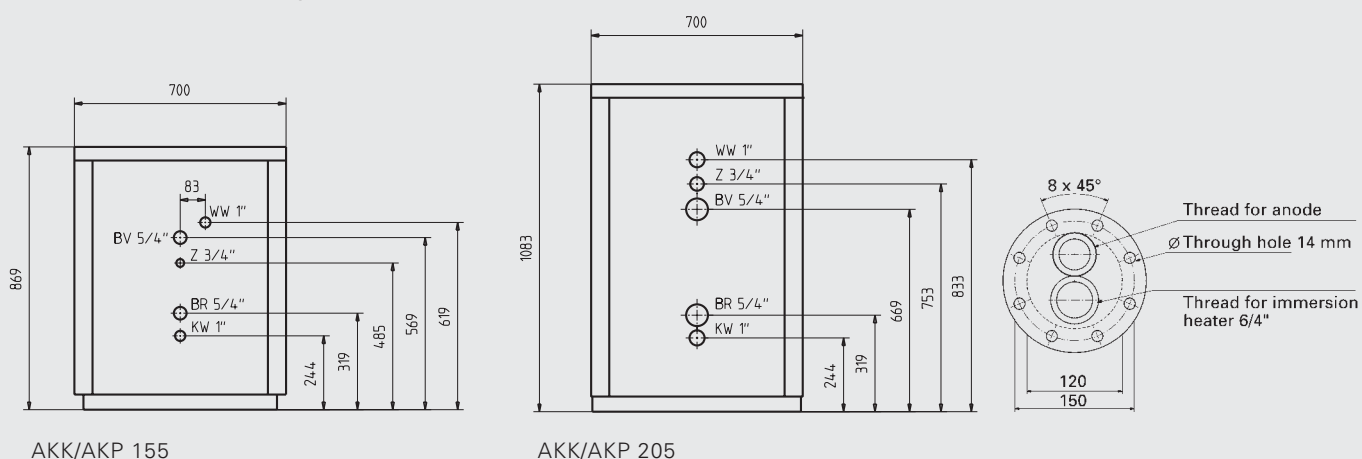
The flexibility of the AquaWIN hot water tank permits a wealth of different combinations. For example an immersion heater and solar energy in the summer and an immersion heater and boiler in the winter.



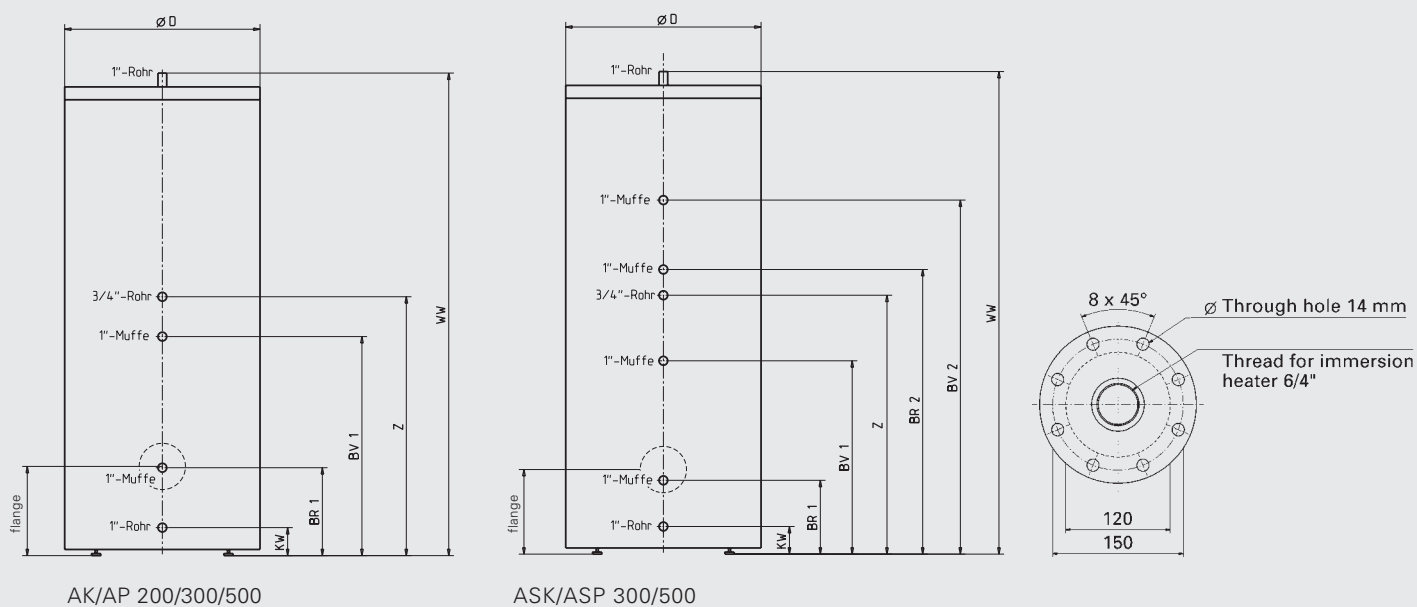
- ① High-quality polyurethane-hard foam-insulation containing no HCFC
  - ② Powered active anode system (AquaWIN Premium)
  - ③ Heating Coil for charging via boiler
  - ④ Thermometer
  - ⑤ Plastic casing coated on soft foam
  - ⑥ Quality enamelling
  - ⑦ Heating coil for charging via solar collectors
  - ⑧ Service flange
- Accessories:**
- ⑨ Immersion heater
  - ⑩ Hot water thermostat (can be directly attached to the hot water tank)

# AquaWIN – Performance data to suit every requirement.

## Dimensions AquaWIN Kombi.



## Dimensions AquaWIN / AquaWIN Solar.

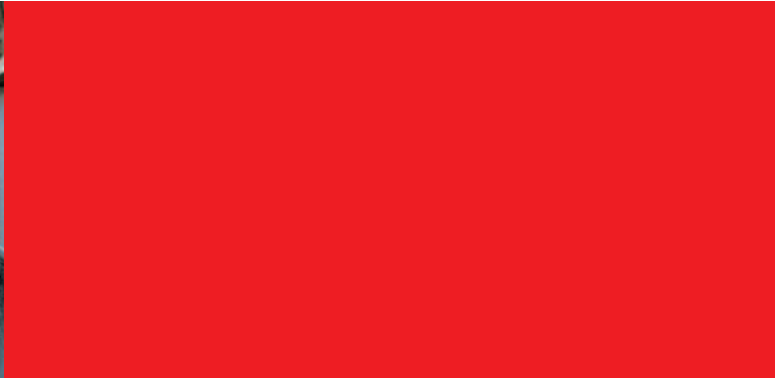


Type	Dimensions in mm						
	WW	Ø D	KW	BR1	BV1	Z	flange
AK / AP 200	1365	600	110	288	663	828	330
AK / AP 300	1822	600	110	288	753	1008	330
AK / AP 500	1863	750	110	395	955	1120	395

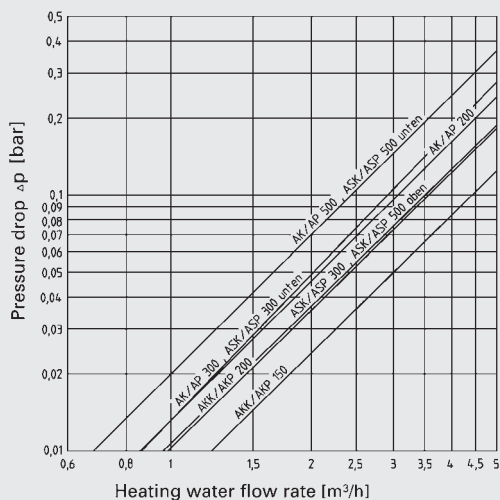
Type	Dimensions in mm								
	WW	Ø D	KW	BR1	BV1	Z	BR2	BV2	flange
ASK/ASP 300	1822	600	110	288	753	1008	1108	1378	330
ASK/ASP 500	1863	750	110	395	955	1120	1220	1490	395

- Ø D = Diameter
- BR 1 = Hot water return lower coil
- BV 1 = Hot water flow lower coil
- BR 2 = Hot water return upper coil
- BV 2 = Hot water flow upper coil
- WW = Hot water
- KW = Cold water
- Z = Circulation



## Technical data

Type		AKK/AKP 155	AKK/AKP 205	AK/AP 200	AK/AP 300	AK/AP 500	ASK/ASP 300	ASK/ASP 500
Weight gross / net	kg	130 / 110	145 / 125	115 / 75	125 / 85	170 / 150	135 / 95	190 / 160
max. working pressure hot water	bar	6	6	6	6	6	6	6
max. working pressure heating water	bar	10	10	10	10	10	10	10
max. temperature hot water	°C	95	95	95	95	95	95	95
max. temperature heating water	°C	110	110	110	110	110	110	110
Heat exchanger surface area	up m <sup>2</sup>						0,70	0,70
	down m <sup>2</sup>	0,75	1	0,91	1,20	1,76	1,20	1,76
Heating water content	up l						4,4	4,4
	down l	6,5	9	6	7,4	11,6	7,4	11,6
Storage capacity produced with:								
Boiler	l	150	200	200	300	500	110	150
Immersion heater	up l						110	150
	down l	120	170	160	260	425	240	425
Solar	l						295	500
Stand-by losses	W/h	74	70	87,5	104,2	125	95,8	116,7
Continuous output 45°C by 70°C	up l/h (kW)						401 (16,3)	361 (14,7)
	down l/h (kW)	470 (19,1)	517 (21)	556 (22,6)	598 (24,3)	841 (34,2)	598 (24,3)	841 (34,2)
Continuous output 45°C by 80°C	up l/h (kW)						571 (23,2)	514 (20,9)
	down l/h (kW)	610 (24,8)	820 (33,3)	738 (30)	785 (31,9)	1107 (45,0)	785 (31,9)	1107 (45,0)
Continuous output 60°C by 70°C	up l/h (kW)						198 (11,5)	178 (10,4)
	down l/h (kW)	205 (11,9)	315 (18,3)	258 (15,0)	291 (16,9)	429 (24,9)	291 (16,9)	429 (24,9)
Continuous output 60°C by 80°C	up l/h (kW)						301 (17,5)	271 (15,8)
	down l/h (kW)	310 (18,0)	470 (27,3)	410 (23,8)	444 (25,8)	634 (36,8)	444 (25,8)	634 (36,8)
Heating water flow rate	l/h	3000	3000	3000	3000	3000	3000	3000



## Accessories:



**Immersion heater**  
Immersion heaters are available to load the storage tank in the summer with an output of 2.2/3/4 or 6 kW. The 2.2 kW immersion heater can be connected with 230 V and the 3, 4 and 6 kW immersion heaters with 380 V.



**Hot water thermostat**  
Controls the hot water temperature and is only necessary if the hot water tank is integrated in a heating system without control.



**Hot water timer NB-060**  
The hot water timer is an accessory which makes sense to time the preparation of hot water. Thus the burner to charge the boiler only enters into operation when you want it to.

[www.windhager.com](http://www.windhager.com)

## Windhager provides more than first-class products:

### Quality consulting from our expert partners.

You can obtain WINDHAGER ZENTRALHEIZUNG products from our expert PARTNERS. These are experienced heating specialists who work in close professional cooperation with WINDHAGER ZENTRALHEIZUNG to achieve best results for the customer.

### Professional customer service network.

Perfect customer service is one of the mainstays of WINDHAGER's success. Our professional customer service network guarantees the best customer care every day. Our customer service technicians are experienced non-bureaucratic professionals who work quickly and reliably.



### Unique guarantees.

Our full five-year guarantee provides you with optimal security. Because our unique full guarantee doesn't just cover material (excluding wear parts), it also includes the travel and labour costs of the customer service technician. Not only that, but we also guarantee to supply your device with spare parts for 15 years from the date of purchase.

Guarantee conditions for five years full guarantee resp. 10 years hot watertank guarantee according guarantee conditions.

- Documented anode control, every 2 to 3 years.



AquaWIN  
Premium



AquaWIN  
Klassik

Your expert partner:

### Austria:

Windhager Zentralheizung GmbH  
A-5201 Seekirchen near Salzburg  
Anton-Windhager-Straße 20  
Tel. +43 (0) 62 12/23 41-0  
Fax +43 (0) 62 12/42 28

Windhager Zentralheizung GmbH  
A-1230 Vienna  
Carlberggasse 39  
Tel. +43 (0) 1/869 43 28  
Fax +43 (0) 1/865 13 81

e-mail [info@at.windhager.com](mailto:info@at.windhager.com)

### Germany:

Windhager Zentralheizung GmbH  
D-86405 Meitingen near Augsburg  
Deutzring 2  
Tel. +49 (0) 82 71/80 56-0  
Fax +49 (0) 82 71/80 56-30

Windhager Zentralheizung GmbH  
D-04509 Delitzsch near Leipzig  
Heinrich-Rudolf-Hertz-Straße 2  
Tel. +49 (0) 3 42 02/723-0  
Fax +49 (0) 3 42 02/723-0

e-mail [info@de.windhager.com](mailto:info@de.windhager.com)

### Switzerland:

Windhager Zentralheizung Schweiz AG  
CH-6203 Sempach-Station near Luzern  
Industriestrasse 13  
Tel. +41 (0) 41/469 469-0  
Fax +41 (0) 41/469 469-9

e-mail [info@ch.windhager.com](mailto:info@ch.windhager.com)